



PRODUCT SPECIFICATIONS - SANDTRAPPER

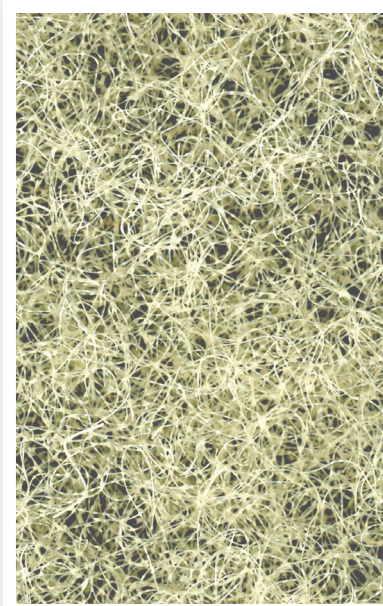


1.0 DESCRIPTION

The Sandtrapper II nonwoven material (matrix) is constructed of polyester fibers in a textured nonwoven fabrication.

2.0 PROPERTIES

Physical Property	Value
Color	Opaque
Weight - oz sq yd/kg sq m(lbs/roll)	16 / .376 (75)
Thickness (mm)	15
Fiber Type	Polyester
Binder	Cross-Linking Non Soluble
Area Per Roll - 56" (1.42m)	560 ft ² (51.93m ²)
Area Per Roll - 90" (2.286m)	1125 ft ² (106.8m ²)
Rolls Per Trailer - 56" (1.42m)	60
Rolls Per Trailer - 90" (2.286m)	38-42



3.0 USE

Sandtrapper II is used for golf course bunkers with extreme to moderate slopes in order to combat washouts and sand contamination. It is used along the sloped areas and used throughout the entire bunker. It can be used in hybrid configurations with more cost-conscious products — Sandtrapper MD and Sandtrapper I.

4.0 CONSTRUCTION

Sand Trapper II is a matrix of polyester fiber and latex binder.

5.0 GREEN INITIATIVE

Water Based Latex Resins are used in the manufacturing process. No phenol-formaldehyde resins are used in our binding process.

Manufacturing plants operate under EPA approved Clean Air Permit.

6.0 PRODUCT CARE

To prolong the life of the Sand Trapper II material (matrix), it is recommended that the product be stored indoors or covered when outdoors for an extended period to maintain protection from UV light.

